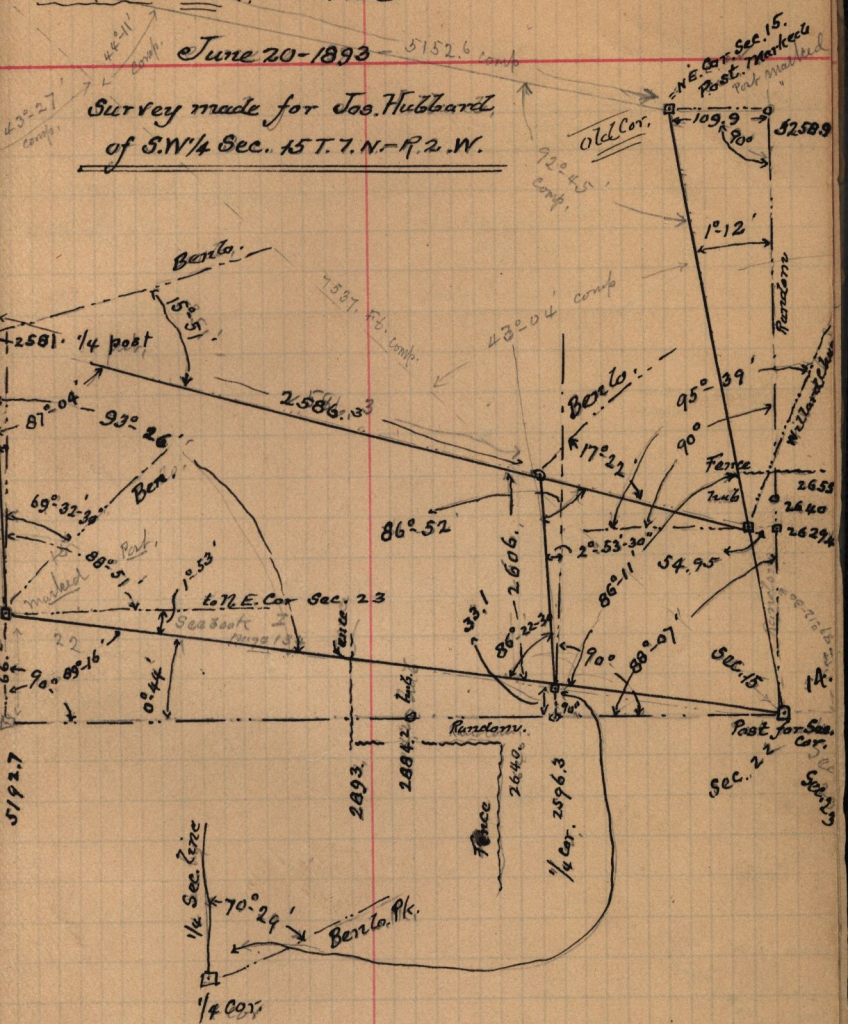


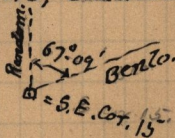
See book I - page 74 - 52 -
 cor. to Secs. 9-10-15-16
 T. 7. N. R. 2. W. Old Cor. - 123 -

June 20 - 1893 - 5152.6 comp

Survey made for Jos. Hubbard,
of S.W. 1/4 Sec. 15 T. 7. N. - R. 2. W.



H. H. Hubbard & Enoch Danielson, chainbearers.



163° 10' = Post set by Hollidge for 1/4 post
 2640 = S.E. line, Sec. 15 of St. 2620